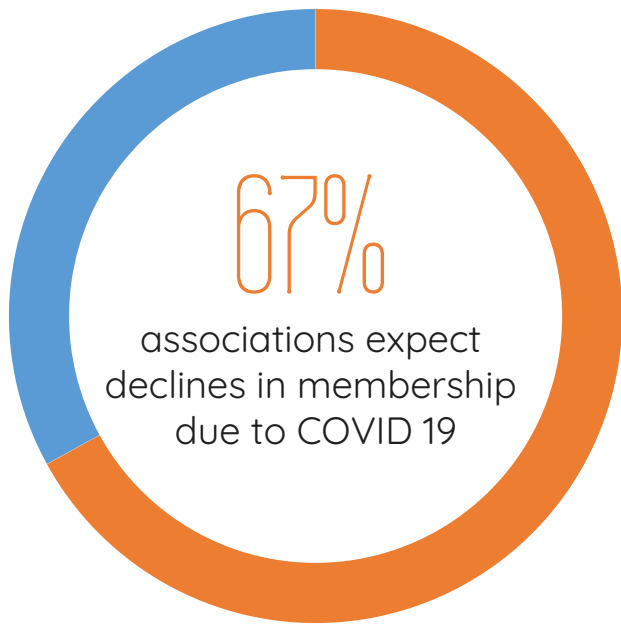
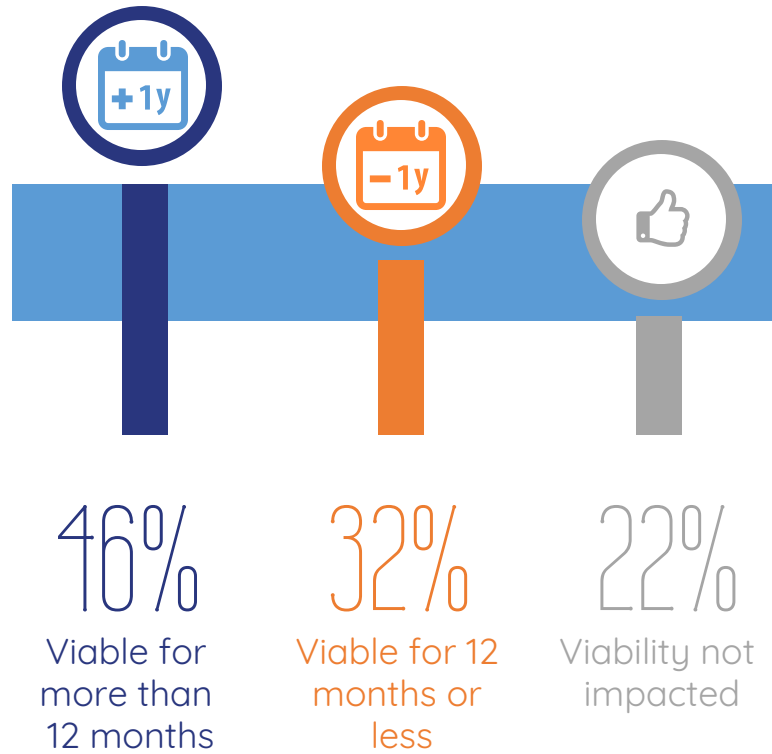


EARLY IMPACT OF COVID19 ON CANADIAN ASSOCIATIONS - MAY 2020

Impact on Membership

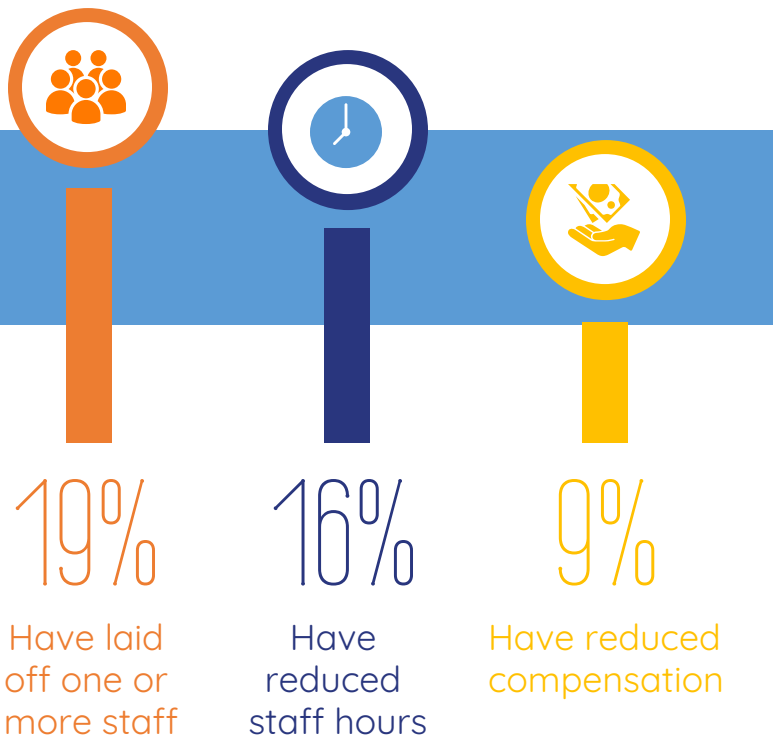


Financial Viability



30% made decisions that impacted staff

HR Actions Affecting One or More Staff



Notes: Source: TPG Pulse Survey in partnership with CSAE, survey of 372 Canadian associations and other nonprofits from April 29 to May 8, 2020. Results are reflective of the 372 participating organizations and may or may not be representative of the entire Canadian association and nonprofit sector.